

Comparison table for turning insert chipbreaker

Negative inserts

ISO	Machining range	ZCC.CT	SANDVIK	KORLOY	TaeguTec	WALTER	SECO	mitsubishi	sumitomo	KENNAMETAL	DUJET	HITACHI	TUNGALOY	KYOCERA	VALANTTE	
P	For extra finishing		QF	HU	FA, EA	NF3	FF1	PK※ FH, FY	FA, FL	UF, FF	F1, FA	FE	01※, TF, ZF	DP※, GP, VF XP, XP-T	F1	
	For finishing	DF	PF MF	HF	FG, SF	NS6	MF2	C, SA, SH	SU, LU, SX	LF, FN	PF, UR UA, UT	BE, CE	NS, 27 TS, AS	HQ, CQ	F2(2B), F5(5C)	
	For finishing (Soft steel)	SF		HF				SY					17	XQ, XS		
	For finishing (Wiper)	WGF	WP WF	HW		NF	W-MF2	SW	LUW	FW			AFW, ASW	WP, WQ		
	For semi-finishing	DM PM	PM QM SM	HA HC HM	MC ML MP	NM4 NM6	MF3 M3 M5	MV MA MH	GU UG UX	MG MN	PG UB	AB AY AE	NM ZM TM DM 37	CJ, GS PS, HS PT, CS	F3, F4(8A), M2(2C), M3 M4, M5(5B), M6, M7, 55, M8	
	For semi-finishing	WGM	WM		WS, WT	NM	W-M3	MW	GUW	MW						
	(Wiper)	DR (Double-side)	PR		MT, MG	NM9	MR7	GH	MU, MX	RN	UD, GG	AR, RE	TH	GT, HT		
	For light roughing	LR, DR (Single-side) HDR, HPR	QR PR HR	HR HH	HT, RH	NR6	R4, R6 R7, PR9	HZ, HX HV	MP, HG HP	MR, RM RH	UC	HX HE	57, 65, TU	HX	R3, R4, R6(9A) R7(9B), R9(9C)	

※ Periphery grinding type

Comparison table for turning insert chipbreaker

Negative inserts

ISO	Machining range	ZCC.CT	SANDVIK	KORLOY	TaeguTec	WALTER	SECO	MITSUBISHI	SUMITOMO	KENNAMETAL	DIJET	HITACHI	TUNGALOY	KYOCERA	VALANTTE
M	For finishing	EF	MF	HA	FG, SF	NF4		FS	SU	K, FP		SE	SS	GU	F1, F2(2B), F5(5C)
	For semi-finishing	EM	MM	HS	ML, MP	NM4		MS, ES	EX, UP	P, MP	SF, SG	DE	SA, SM, S	SU, HU, ST	F3, F4(8A), M2(2C), M3 M4, M5(5B), M6, M7, 55, M8
	For roughing	ER	MR	GS, HM	MT, RH	NR4	M5, MR7 56, R6	GH, HZ	MP	RP					R3, R4, R6(9A) R7(9B), R9(9C)
K	For finishing	PM	KF	Without chip-breaker	FG	MA		Through chip-breaker,	UZ	FN		Y	CM	Through chip-breaker, C	F2(2B)
	For Semi-Finishing	PM	KM	Through chip-breaker, HM	MC, MT, MG	MA, NM5		Through chip-breaker,	UX	Through chip-breaker, UN		V	33, through chip-breaker	ZS, GC	M5(5B), M6, M8
	For roughing	Without chip-breaker	KR	GR, HR, GH	RT, RH	MA		Without chip-breaker	Without chip-breaker					Without chip-breaker	R3, R4, R7(9B)
S	For finishing	NF			SF	NF4	MF1※	FJ※		FS※, K※					F5(5C), M2(2C)
	For semi-finishing	NIM	NGP※, 23			NM4	M1	MJ※	SU※	NGP※			SA		M4, M5(5B), M7, 55
	For roughing		SR			NR4		GJ		MS					

※ Periphery grinding type

Comparison table for turning insert chipbreaker

Positive inserts

ISO	Machining range	ZCC-CT	SANDVIK	KORLOY	TaeguTec	WALTER	SECO	MITSUBISHI	SUMITOMO	KENNAMETAL	DIJET	HITACHI	TUNGALOY	KYOCERA	VALANTTE
P	For finishing	USF, SF, HF	UF, PF	HFP	FA, FG	PF4	FF1 F1	FV, SV	FP, LU SU, SK	11, UF LF		JQ	01※, PF FS	GP, XP VF	PF4 JQ, JZ
	For finishing (Wiper)		WK※, W WP			PF	W-F1	SW	LUW	FW					
	For semi-finishing	HM	UM PM	HMP C25	MT, CMX	PS5 PM5	F2	MV, through chip-breaker	MU	MF	FT	JE	PM 23, 24	HQ, XQ GK	PM2 PM4
	For semi-finishing (Wiper)		WM			PM		MW		MW					
M	For finishing	EF	MF	HFP	FA, FG	PF4		SV					SS※		1A, 2A
	For semi-finishing	EM	MM	HMP C25	MT CMX	PS5 PM5		Through chip-breaker, MV							PM2 PM4
K	For semi-finishing	HM, HR without chip-breaker	KF KM KR	HMP C25	MT CMX	MW PS5 PM5		Without chip-breaker	Without chip-breaker※		FT		Without chip-breaker	Without chip-breaker※	PM2 PM4
	For finishing/ For semi-					PF4 PS5 PM5		FJ※	SC※	LF※ HP※					PM2, 1A 2A
N	For general turning	LC, LH	AL	TAAK MA	FL	PM2			AG	HP	ALU ACB		PP	A3	1L, 1A 2A

※ Periphery grinding type

Grades comparison table

CVD coating

Application	ISO Code	ZCC.CT	SANDVIK	KORLOY	TaeguTec	WALTER	mitsubishi	sumitomo	tungaloy	kyocera	DIJET	HITACHI	KENNAMETAL	SECO	ISCAR
Turning	P	P01	GC4005 GC4205		WAP01	UE6050 UE6105	AC810P AC700G	T9005	CA5505	JC110V	HC5000 HG8010	KCP05 KC9105	TP1000 TK1000	IC428, IC9150 IC8150	
			GC4215 GC4015	NC3010 NC3015	TT1300	UE6050, UE6110 UE6020, UC6010 UC6010	AC700G AC820P AC2000 AC810P	T9005 T9015	CA5505 CA5515	JC110V JC215V	HG8010 GM8015 GM10	KCP10 KC9110 TN7005 TN7010	TP1000 TP2000 TK1000 TK2000	IC9150, IC9015, IC8150	
	P20	GC4015 GC4225 GC4025	NC3020	TT1500	UC6010 UE6020 UE6010 UE6110	AC2000 AC3000 AC820P	T9015 T9025	CA5515 CA5525 CA5025 CR9025	JC110V JC215V	HG8025 GM8020	KCP25 KC9025 KC9125 TN7015	TP200 TP2000 TK2000	IC9025, IC9250 IC9054, IC8350		
		GC4225 GC4235 GC4025 GC4035 GC2135	NC3030	TT3500 TT5100	UE6035 UH6400 US735	AC830P AC630M AC3000	T9025 T9035	CA5525 CA5535 CR9025	JC215V JC325V	GM25	KCP30 KCP40 KC8050 TN7025	TP300 TP3000	IC9350, IC656, IC8350		
	P40	YBC251 YBC252 YBC351	GC4235 GC4035 GC235	TT450	UE6035 UH6400 US735	AC630M	T9035	CA5535	JC325V JC450V	GM8035 GX30	KC9140, KC9040 KC9240, KX9245 TN7035, TPC35	TP3000 TP400 TP40	IC9350 IC635		
	M10		GC2015		WAM10	US7020	AC610M	T9015	CA6515 CA6015	JC110V	GM10	KCM15, TN7010	TP200	IC9250	
	M20	YBM151 YBM153	GC2025	NC9020	TT2500	US7020	AC610M AC630M	T6020 T9025	CA6525 CA6015	JC110V JC215V	GM8020	KC9225 TN7015	TP200	IC9250, IC9025 IC9054	
	M30	YBM151 YBM251	GC2135 GC235	NC3030	TT3500	US735	AC630M	T6030		JC215V JC325V	HG8025 GM25	KCM25 KC8050 TN8025	TP300 TP400 TP40	IC9350 IC9025	
	M40	YBM253	GC2025		TT5100	US735	AC630M			JC325V JC450V	GX30	KCM35, KC9240 TPC35	TP400 TP40	IC656, IC635 IC9350	
	K01	YBD052	GC3205 GC3210			UC5005 UC5015	AC300G AC410K	T5010	CA4505 CA4010	JC105V	GM3005	KC05	TK1000	IC9150	
K10	YBD102 YBD151	GC3205 GC3210 GC3215	NC305K	TT1300	UC5115 UE6110	AC410K AC700G AC420K	T5010	CA4515 CA4010 CA4115	JC105V JC110V	HG8010 GM8015	KVK15, KCK20 KC9315, KC9110 TN5015	TK1000 TK2000	IC9150, IC9015 IC418, IC428 IC4010		
K20	YBD152 YBD252	GC3215	NC315K	TT1500	UC5115	AC700G AC820P	T5020	CA4120	JC110V JC215V	HG8025 GM8020	KCK20, KC9320 TN5020	TK2000 TP200	IC9015		

Grades comparison table

CVD coating

Application	ISO Code	ZCC.CT	SANDVIK	KORLOY	TaeguTec	WALTER	MITSUBISHI	SUMITOMO	TUNGALOY	KYOCERA	DIJET	HITACHI	KENAMETAL	SECO	ISCAR	
Milling	P01															
	P10							ACP100			JC730U		TN2510 TN25M		IC9080 IC4100	
		P20	YBM251	GC4020 GC4220			WAP25	FH7020 F7030	ACP100		JC730U		TN7525	T200M T250M	IC520M	
	P30								AC230	T3030			KC930M	T250M T350M T25M	IC4050	
		P40	YBM351	GC4030 GC4230	NCM335	TT7300	WAP35	F7030	AC230				GF30 GX2030 GX30	T350M		
	M01															
		M10												TN25M		
	M20											JC730U		TN7525	T350M T25M	IC520M
		M30	YBM251 YBM253					F7030						KC930M TN7535	T250M T25M	IC4050
	M40												GF30 GX30			
		K01										JC600				IC9080
	K10								ACK200 AC211	T1015		JC600		TN5505 TN5515		IC4100
		K20	YBD152		NCM310		WAK15	F5010 MC5020						KC915M TN5520	T150M T200M	IC520M IC5100 IC9150
K30			GC3220 GC3020 K20D K20W	NCM320		WAK25	F5020 MC5020	ACK200	T1015		JC610		KC930M KC935M	T200M	IC4050 IC520M	
		YBC302	GC3040								JC610					

Grades comparison table

PVD coating

Application	ISO Code	ZCC-CT	SANDVIK	KORLOY	TaeguTec	WALTER	MITSUBISHI	SUMITOMO	TUNGALOY	KYOCERA	DIJET	HITACHI	KENNAMETAL	SECO	ISCAR	
Turning	P01									PR915 PR1005	JC5003					
	P	P10	YBG102	GC1525 GC1025				VP10MF		AH710	PR915 PR930 PR1025 RR1115	JC5003		KC5010 KC5510 KU10T	CP200 TS2000	IC250 IC507 IC570
		P20	YBG202	GC1525 GC1020 GC1025 GC1125	PC230			VP15TF VP20MF		AH710 AH330	PR630 PR915 PR930 PR660 PR1025 RR1225	JC5015		KC5025 KU25T	CP250 TS2500	IC908 IC928 IC1008 IC1028 IC3028
		P30	YBG202	GC1025 GC1125				VP15TF VP20MF		GH330 GH730 AH120 AH330 AH740	PR630 PR660	JC5015		KC7015 KC7020 KC7235	CP500	IC928 IC1028 IC1008 IC3028
		P40	YBG302	GC1020 GC2145	PC240			VP15TF VP20MF		AH120	PR660			KC7040	CP500	IC928 IC1008 IC1028
	M	M01									PR915 PR1025					
		M10	YBG102	GC1005 GC1025 GC1125				VP10MF	AC510N		PR915 PR930 PR1125 PR1225	JC5003		KC5010 KC5510	CP200 TS2000	IC330 IC354 IC507 IC907 IC3028
		M20	YBG202 YBG205	GC1020 C1025 GC4125	PC9030			VP15TF VP20MF	AC520U	GH330 GH730	PR630 PR915 PR930	JC5015		KC5025 KC730 KC5525	CP200 CP500 TS2500	IC228 IC354 IC250 IC3028
		M30	YBG302	GC1020 GC2035	PC9030			VP15TF VP20MF	AC520U AC530U	AH120	PR630 PR660	JC5015		KC5025 KC5525	CP500	IC908 IC1008 IC928 IC1028
	M40		GC2035 GC2145					AC530U		PR660						IC228 IC328
	K	K01							EH10Z	AH110		JC5003				
		K10	YBG102		PC205K				EH10Z	GH110 AH110		JC5003 JC5015		KC5010 KC5510	CP200 TS2000	IC350
		K20	YBG202	GC1020	PC215K			VP10RT VP15TF VP20RT	EH20Z	AH120		JC5015		KC7015 KC7020	CP200 CP250	IC928 IC908 IC1008 IC22
		K30		GC4125				VP15TF						KC7225	CP500	IC928 IC908 IC1008 IC22
	S	S01		GC1105				VP05RT		AH110	PR915	JC5003				IC507
		S10	YBG102 YBG105	GC1005 GC1025 GC1125				VP05RT VP10RT	AC510U	AH120	PR915 PR1125	JC5015		KC5410 KC5010	CP200 CP250	IC903
S20			GC4125				VP10RT VP15TF	AC510U AC520U		PR915			KC5025 KC5525	CP250 CP500	IC300 IC808 IC928	
S30			GC1125 GC2145				VP15TF	AC520U		PR1125						

Grades comparison table

PVD coating

Application	ISO Code	ZCC.CT	SANDVIK	KORLOY	TaeguTec	WALTER	mitsubishi	sumitomo	TUNGALOY	KYOCERA	DIJET	HITACHI	KENAMETAL	SECO	ISCAR
Milling	P	P01						ACP100			JC5003	PTH08M PCA08M PCS08M TB6005 JX1005			
		P10				WXH15 WXM15		ACZ310 ACP100 ACP200		PR730 PR830 PR1025 PR1225	JC5003 JC5030	PCA12M TB6005 JX1020 PC20M	KC715M		IC250 IC903 IC950
		P20						ACZ310 ACZ330 ACP200		PR630 PR730 PR830 PR860 PR1025 PR1225	JC5015 JC5030 JC5040	TB6020 CY150 JX1015	KC522M KC525M	F25M MP3000	IC950 IC900 IC908 IC910
		P30				TT7030 TT7070 TT9030	WXM35	VP15TF VP30RT	ACZ300 ACZ350 ACZ200	GH330 AH330 AH120 AH740	PR630 PR660 PR730 PR830 PR1230	JC5015 JC5040	TB6045 CY250 CY25 HC844 JX1045 PTH30E	KC725M	F25M, F30M MP3000
	P40				TT8020 TT8030	WXP45	VP30RT	ACZ350 ACP300	AH120	PR660 PR1230	JC5040	PTH30E TB6060 PTH40H	KC735M	F40M, T60M	IC900 IC928 IC300 IC328
	M01											PCS08M			
	M10					WXM15		ACP200		PR630 PR730 PR830	JC5003	CY9020 JX1020	KC715M		IC903
	M20						VP15TF VP20RT	ACZ310 EH20Z ACP300	GH330	PR630 PR730 PR830 PR660	JC5015 JC5030 JC5040	TB6020 CY150 JX1015	KC730 KC522M KC525M	F25M MP3000	IC900 IC903 IC908 IC928
	M30						VP15TF VP20RT VP30RT	ACZ330 EH20Z ACZ350	AH120	PR630 PR660 PR730 PR830 PR1225	JC5015 JC5030 JC5040	TB6045 CY250 HC844	KC725M KC735M	F30M F40M	IC928 IC328 IC1008
	M40						VP30RT	ACZ350 ACP300	AH140	PR660	JC5015	TB6060 PTH40H JX1060			IC928 IC328

Grades comparison table

Application	ISO Code	ZCC-CT	SANDVIK	KORLOY	TaeguTec	WALTER	MITSUBISHI	SUMITOMO	TUNGALOY	KYOCERA	DIJET	HITACHI	KENAMETAL	SECO	ISCAR	
Milling	K	K01							AH110	PR510 PR905	JC5003	PTH08M PCA08M PCS08M				
		K10	YBG102	GC1010	PC205K		WXH15 WXM15		ACZ310 ACK200	AH110 GH110	PR510 PR905	JC5003	CY9020 TB6005 CY100H	KC510M	IC900 IC910	
		K20	YBG202 YBG152	GC1010 GC1020	PC215K	TT6030		VP15TF VP20RT	ACZ310 ACK200	AH120	PR510 PR905	JC5015	TB6020 CY150 PTH13S	KC520M KC525M	MK2000	IC910 IC950
		K30		GC1020				ACZ330 ACK300				JC5015	TB6045 CY250 PTH40H	KC725M KC735M	IC908 IC950 IC928	
		S01										JC5003				
		S10	YBG102	GC1025		TT6030		VP15TF	EH520Z	AH120	PR660	JC5015	PCS08M	KC510M	IC908	
		S20		GC1025		TT8020	WXM35	VP15TF	EH520Z EH20Z		PR660		CY100H CY10H	KC522M KC525M	IC908	
		S30		GC2030 S30T		TT8030 TT9030			ACK300		PR660			KC725M	IC328 IC928	
		H01										JC5003			IC903	
		H10		GC1010 GC1030			WXH15	VP15TF				JC5015	PTH08M PCA08M JX1005	KC635M	MH1000 F15M	IC900
		H20		GC1010			WXP45	VP15TF						KC635M	F15M	IC1008 IC808
		H30		GC1030										KC530M	F30M MP3000	IC1008 IC908

Grades comparison table

Application	ISO Code	ZCC.CT	SANDVIK	KORLOY	TaeguTec	WALTER	MITSUBISHI	SUMITOMO	TUNGALOY	KYOCERA	DIJET	HITACHI	KENAMETAL	SECO	ISCAR	
P	P01			CC105 CN100			AP25N	T110A T2000Z	NS520 AT520 GT520 GT720	TN30 PV30	LN10 CX50				IC20N IC520N	
	P10	YNG151 YNG151C	CT5015 GC1525	CC15 CN200 CT10	PV3010		AP25N NX2525	T1200A T2000Z	NS520 AT530 GT720 GT730	TN60 PV60 PV7020	CX50 CX75	CZ25	KT125 KT315	CM CMP	IC20N IC520N IC530N	
	P20		GC1525		CT3000		AP25N UP35N NX2525 NX3035	T1200A T2000Z T3000Z	NS530 GT530 GT730 NS730	TN10 TN6020 PV90 PV7020	CX75	CH550	KT5020 KT325 KT1120			IC20N IC75T IC30N IC520N IC530N
P30						VP45N	T3000Z	NS530 NS730								IC75T IC30N
M	M01															
	M10	YNG151 YNG151C	GC1525		PV3010		NX2525 AP25N	T110A T2000Z	NS520 AT530 GT530 GT720	TN60 TN6020 PV60 PV7020	LN10 CX50		KT125	CM CMP		
	M20				CT3000		NX2525, AP25N NX3035	T1200A T2000Z	NS530 GT730 NS730	TN90 TN6020 PV90 PV7020	CX50 CX75	CH550				
	M30							T3000Z								
K	K01			CC105 CN100			AP25N NX2525	T110A T2000Z	NS520 AT520 GT520 GT720	TN30 PV30	LN10					
	K10	YNG151 YNG151C	CT5015	CC115	CT3000		AP25N NX2525	T1200A T2000Z	NS520 GT530 GT730 NS730	TN60 PV60 PV7020	LN10		KT325 KT125			
	K20						AP25 NX2525	T3000Z			CX75					

Grades comparison table

Application	ISO Code	ZCC.CT	SANDVIK	KORLOY	TaeguTec	WALTER	MITSUBISHI	SUMITOMO	TUNGALOY	KYOCERA	DIJET	HITACHI	KENAMETAL	SECO	ISCAR	
Milling	P01															
	P10	YNG151 YNG151C		CN100	CT3000		NX2525			TN60	CX75			C15M	IC30N	
	P20		CT530	CN20	CT520		NX2525		NS530	TN100M	CX75 CX90	CH550 CH7030 MZ1000 MZ2000	KT530M HT7 KT605M	C15M	IC30N	
	P30			CN30			NX4545	T250A	NS530 NS540 NS740		CX90 CX99	MZ3000 CH7035			IC30N	
	M01															
	M10	YNG151 YNG151C			CT3000		NX2525			TN60						IC30N
	M20		CT530		CT520		NX2525		NS530	TN100M	CX75	CH550 CH7030 MZ1000 MZ2000	KT530M HT7 KT605M	C15M	IC30N	
	M30						NX4545	T250A	NS540 NS740		CX90 CX99	MZ3000 CH7035				
	K01															
	K10	YNG151 YNG151C			CT520		NX2525		NS530	TN60						
	K20						NX2525				CX75		KT530M HT7			
	K30															

Grades comparison table

PCBN grade

Application	ISO Code	ZCC.CT	SANDVIK	KORLOY	TaeguTec	WALTER	MITSUBISHI	SUMITOMO	TUNGALOY	KYOCERA	DIJET	SECO	Element Six	
Turning	H01					WCB30	MBC010 MB810	BNX10 BNC30	BXM10 BX310 BXC30			CBN050C CBN100		
	H10	YCB012	CB7015 CB7020 CB20	KB320 KB330 KB420	KB90 KB90A	WCB50	MBC020 MB8025 MB820 MB825	BNC80 BNX20 BNC160	BXM20 BX330 BXA30	KBN510	JBN300	CBN10 CBN200	DBC50	
	H20		CB7025 CB7050 CB50				MBC020 MB835	BN250 BNC200 BNX25	BXC50	KBN525	JBN245	CBN150 CBN200	DBN45	
	H30						MBC020 MB835	BNC300 BN350	BX380			CBN300 CBN350		
	S01	YCB011					MB730	BN600 BN700	BX450 BX950 BX480					
	S10													
	S20													
	S30													
	K01												CBN300 CBN300P	
	K10	YCB011	CB50 CB7050	KB350 KB360	KB90 KB90A	WCB50	MB710 MB710 MB730	BN500 BN700	BX930 BX480 BX950	KBN65B	JBN795	CBN200	DBA80	
	K20						MB730 MBS140	BN700 BNS800	BXC90	KBN900	JBN330	CBN300		
	K30						MBS140	BNS800	BXC90			CBN350		

PCD grade

Application	ISO Code	ZCC.CT	SANDVIK	KORLOY	TaeguTec	WALTER	MITSUBISHI	SUMITOMO	TUNGALOY	KYOCERA	DIJET	SECO	Element Six
Turning	N01						MD205	DA90	DX180	KPD001 KPD025	JDA735	1700 1800	CTH025
	N10	YCD011	CD10	DP90 DP150 DP200	KP500	WCD10	MD205 MD220	DA150	DX160	KPD010	JDA745	1500	CTB010
	N20						MD220 MD230	DA200 DA2200	DX140 DX120	KPD002 KPD230	JDA715 JDA10	1300	CTB002
	N30						MD230	DA1000 DA2200		KPD001		1600	

Cemented carbide material

Application	ISO Code	ZCC-CT	SANDVIK	KORLOY	TaeguTec	WALTER	mitsubishi	SUMITOMO	TUNGALOY	KYOCERA	DIJET	HITACHI	KENNAMETAL	SECO	ISCAR	
Turning	P01			ST05												
	P	P10	S1P	ST10	P10			ST10P	TX10S		SRT	WS10	P10			IC70
		P20	SMA	ST20	P20		UT120T	ST20E	TX20 TX25		SRT DX30	EX35	K125M TTM			IC70 IC50M
	M	P30	SM30	ST30A	P30		UT120T	A30 A30N	TX30 UX30	PW30	SR30 DX30	EX35 EX40	GK K600 TTR			IC50M IC54
		P40	S6					ST40E	TX40		SR30 DX35	EX45	G13			IC54
	K	M10	YC10	H10A	U10	M10		EH510 U10E	TU10		UMN	WA10B	K313		890	
		M20		H13A	U20	M20		EH520 U2	TU20 UX30		DX25 UMS	EX35	K68 KMF K125M TTM		HX 883	IC08
		M30	YC40	H10F SM30	ST30A			A30 A30N	UX30		DX25 UMS	EX40 EX45	K600 TTR			IC08 IC28
		M40		S6	U40	M40			TU40		UM40	EX45	G13			IC128
	N	K01	YD051	H1P	H02		UT05T	H1 H2	TH03 KS05F			WH05	K605			
		K10	YD101	H1P H10 HM	H01	K10		EH10 EH510	G1F TH10	KW10	KG10 KT9	WH10	K313 K110M THM THM-U		890	IC20
		K20	YD201	H13A	G10	K20		G10E EH20 EH520	G2F KS15F G2 KS20	GW10	CR1 KG20	WH20	K715 KMF K600		890 HX 883	IC20 IC10
		K30			G3		UT120T	G10E	G3		KG30		THR		883	IC10 IC28
		N01		H10 H13A				H1 H2	KS05F		KG03		K605			
	S	N10	YD101		H01	K10	WK10	EH10 EH510	TH10 H10T		KG10 KT9		K313 K110M THM THM-U		890 H15	
		N20	YD201			K20		G10E EH20 EH520	KS15F		CR1 KG20		K715 KMF K600		HX KX 883 H15 H25	
		N30									KG30		G13 THR		H25	
		S01					RT9005				KG03					
		S10	YD101	H10 H10A H10F H13A	H01	K10		EH10 EH510	KS05F TH10		FZ05 KG10		K10 K313 THM		890	
		S20					RT9010 TF15	EH20 EH520	KS15F KS20		FZ15 KG20		K715 KMF		890 883 HX H25	
		S30					TF15				KG30		G13 K600 THR			

Grades comparison table

Cemented carbide material

ISO Code	ZCC.CT	SANDVIK	KORLOY	TaeguTec	WALTER	mitsubishi	SUMITOMO	TUNGALOY	KYOCERA	DIJET	HITACHI	KENAMETAL	SECO	ISCAR
P10	YC10	S1P								SRT				
P20			ST20	P10		UT120T	A30N	TX25		SRT DX30	EX35	K125		IC50M IC28
P30			ST30A	P20		UT120T	A30N	UX30	PW30	SR30 DX30	EX35 EX40	GX K600		IC50M IC28
P40	YC40		ST40	P30					PW30	SR30	EX45			IC28
M10	YC10		U10	M10						UMN		K110M		
M20			U20	M20		UT120T	A30N			DX25 UMS	EX35	K313		
M30	YC40					UT120T	A30N	UX30		DX25 UMS	EX40 EX45	KFM K600		IC28
M40			U40	M40				TU40			EX45			IC28
K01	YD051		H01			UT105T				KG03				
K10	YD101	H1P	H05 H10	K10	WK10	HT110	G10E	TH10	KW10	KG10	WH10	K110M K313		IC20
K20	YD201		G10	K20		UT120T	G10E			KT9 CR1 KG20	WH20	KFM	HX	IC20 IC10
K30						UT120T				KG30				IC10 IC28

Insert index

A

APKT-ALH	243
APKT-APF	243
APKT-APM	243
ANGX	257

C

CCGT-SF	54
CCGW	81
CCGW-2	81
CCGX-LC	55
CCGX-LH	55
CCMT-EF	54
CCMT-EM	55
CCMT-HF	54
CCMT-HM	54
CCMT-HR	55
CNEG-NF	28
CNGA	74
CNGA-2	74
CNGA	88
CNGN	89
CNGX	89
CNMA	32
CNMG	32
CNMG-DF	28
CNMG-DM	29
CNMG-DR	30
CNMG-EF	28
CNMG-EM	30
CNMG-ER	31
CNMG-NM	30
CNMG-PM	29
CNMG-SF	28

D

CNMG-WGF	28
CNMM-DR	31
CNMM-ER	31
CNMG-WGM	30
CPGT-SF	65
DCGT-SF	56
DCGW	82
DCGW-2	82
DCGX-LC	57
DCGX-LH	57
DCMT-EF	56
DCMT-EM	56
DCMT-HF	56
DCMT-HM	56
DCMT-HR	57
DNEG-NF	34
DNGA	75
DNGA-2	75
DNGN	90
DNGX	91
DNMA	90
DNMG	37
DNMG-DF	33
DNMG-DM	35
DNMG-DR	36
DNMG-EF	34
DNMG-EM	35
DNMG-ER	36
DNMX-WGF	33
DNMX-WGM	35
DNMG-NM	36
DNMG-PM	34

DNMG-SF	33
DNMM-DR	36
DNMM-ER	37
DPGT-SF	66

O

OFKR-DF	209
OFKR-DM	209
OFKT-DF	206
OFKT-DM	206
OFKT-LH	206
ONHU-GM	217

P

PNEG-CF/CM/CR/PF/PM/PR	221
PNGU-GR	224

R

RCKT-DM	233
RCKT-DR	233
RCKT-ER	233
RDKW	235
ROHX	259
RPMW	240

S

SCGX-LC	59
SCGX-LH	59
SCMT	59
SCMT-EF	58
SCMT-EM	58
SCMT-HF	58
SCMT-HM	58
SCMT-HR	58
SDMT-DM/PM	266
SEET□PER-PF	228

Insert index

SEET□PER-PM	228
SEET□PER-PR	228
SEK(E)N	203
SEKR	203
SNEG-GM/GR	214
SNGA	76
SNGA-2	76
SNGA	91
SNGN	92
SNGN	43
SNGX	92
SNMA	42
SNMG	42
SNMG-DF	38
SNMG-DM	39
SNMG-DR	40
SNMG-EF	38
SNMG-EM	39
SNMG-ER	41
SNMG-NM	39
SNMG-PM	38
SNMG-SF	38
SNMM	42
SNMM-DR	40
SNMM-ER	41
SPGT-PM/EM	380
SPMT	273

T

TCGW	83
TCGX-LC	61
TCGX-LH	62
TCMT	62
TCMT-EF	60

TCMT-EM	60
TCMT-HF	60
TCMT-HM	61
TCMT-HR	61
TNGA	77
TNGA	93
TNGN	94
TNMA	48
TNMG	47
TNMG-DF	44
TNMG-DM	45
TNMG-DR	46
TNMG-EF	44
TNMG-EM	46
TNMG-ER	46
TNMG-PM	45
TNMG-SF	44
TNMM	48
TNMM-DR	46
TNMX-WGF	44
TNMX-WGM	45
TPGH-L	67
TPGT-SF	67
TPKN	226

V

VBGW	84
VBGW-2	84
VBMT-EF	64
VBMT-EM	64
VBMT-HF	64
VBMT-HM	64
VBMT-HR	64
VCGT-HF	63

VCGT-SF	63
VCGW	85
VCGX-LC	63
VCGX-LH	63
VNEG-NF	49
VNGA	78
VNGA-2	78
VNMG	50
VNMG-DF	49
VNMG-DM	50
VNMG-EF	49
VNMG-EM	50
VNMG-NM	50
VNMG-PM	50
VNMG-SF	49

W

WNEG-NF	51
WNGA	95
WNGA-3	79
WNMA	53
WNMG-DF	51
WNMG-DM	52
WNMG-DR	53
WNMG-EF	52
WNMG-EM	53
WNMG-NM	53
WNMG-PM	52
WNMG-SF	51
WNMG-WGF	51
WNMG-WGM	52
WPGT-PM	251

Z

RT□□□□W-□□□GM	154
---------------------	-----

Insert index

RT□□□□N-□□□GM	155	RT□□□□N-□□□GMB	168	ZOHX-GF	261
RT□□□□N-A(G)(N)□□(P*)...	156	RT□□□□W-A(G)□□B	169	ZOHX-GM	261
RT□□□□W(N)-□□W	157	RT□□□□W(N)-□□WB	170	ZP□D-MG	128
RT□□□□W(N)-□□UN	158	RT□□□□W(N)-□□UNB	171	ZP□S-MG	128
RT□□□□W(N)-□□BSPT.....	159	RT□□□□W(N)-□□BSPTB ...	172	ZR□D-EG	132
RT□□□□W(N)-□□□NPT ...	160	RT□□□□W(N)-□□□NPTB... ..	173	ZR□D-MG	132
RT□□□□W-□□UNJ	161	LT□□□□W-□□□GM	154	ZT□D-EG	131
RT□□□□W(N)-□□AC	162	LT□□□□N-□□□GM.....	155	ZT□D-EG	131
RT□□□□W(N)-□□STAC.....	163	LT□□□□N-A(G)(N)□□(P*) ...	156	ZT□D-MG	129
RT□□□□W(N)-□□AP□□□ ...	164	LT□□□□W(N)-□□W	157	ZT□D-MM	130
RT□□□□W(N)-□□RD	165	LT□□□□W(N)-□□UN	158	ZT□S-MG	129
RT□□□□W-□□BUT□.....	166	LT□□□□W(N)-□□BSPT	159		
RT□□□□W-□□□GM	167	LT□□□□W(N)-□□□NPT.....	160		

Tool index

1588SL12/20/30C	355-364	DCLNR/L	98	FMA01	198
A					
AL-2B	295	DDJNR/L	99	FMA02	199
AL-2E	294	DSBNR/L	99	FMA03	202
AL-3E	294	DTGNR/L	100	FMA04(OFKT05□□)	205
AL-2R-ALR	295	DVJNR/L	101	FMA04(OFKR07□□)	208
B					
BMR02	258	DVVNN	100	FMA11	212-213
BMR04	260	DWLNR/L	101	FMA12	216
C					
CMA01	271	E		FMD02(PN11)	219-220
CMD01	272	EMP01	241-242	FMD04	223
D					
		EMP02	247	FMP01	225
		EMP03	250	FMP02	227
		EMP04	251	FMR01	230
		EMP13	255	FMR02	232
		F		FMR03	234

Tool index

FMR04	236
FMR05	238-239

G

GD03	324-354
GD03C	324-354
GD05	324-354
GD05C	324-354
GD08C	324-354
GM-2B	286
GM-2BL	286
GM-2E	283
GM-2EL	283
GM-2ES	288
GM-2R	289
GM-3E	284
GM-3EL	284
GM-4B	287
GM-4BL	287
GM-4E	285

GM-4EL	285
GM-4R	289

H

HMX-2B	293
HMX-2BL	293
HMX-4E	292
HMX-4EL	292

M

MCLNR/L	102
MDJNR/L	102
MTJNR/L	103
MTJNR/L□□-Z	103
MVJNR/L	104
MWLNR/L	104

S

SCLCR/L	105
SCLCR/L	114
SDJCR/L	105

SDUCR/L	115
STFCR/L	116
STGCR/L	108
SVJBR/L	106
SVJCR/L	107
SVVBN	106

U

UM-4E	298
UM-4EL	298

V

VSM-4E	300
VSM-4EFP	301
VSM-4RFP	302

X

XMR01	264-268
-------------	---------

Z

ZTD02/03/04/05	374-379
----------------------	---------



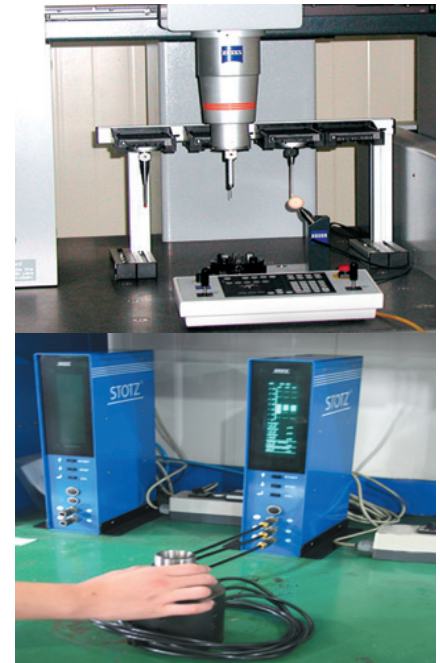
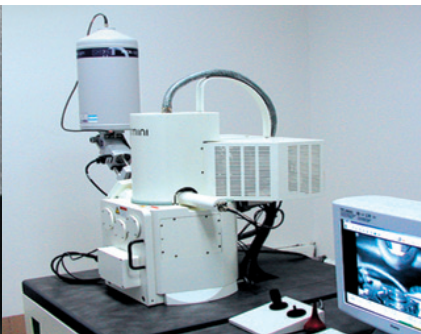
Safety & environmental protection

Cemented carbide products are hard and brittle. They are easily damaged by improper handling and clamping. Be careful when using carbide tools.

When cutting with carbide tools, cooling liquids may be used, and workpiece materials will be formed into chips during the machining process. Both the cooling agent and the chips need to be handled carefully. Protective measures need to be taken to protect individuals, at or near, the work area.

The use of ventilating equipment, protective machine shields, safety glasses, protective clothing, appropriate ear protection, and other relevant forms of safety protection, is recommended.

Please consult your material safety data sheet (MSDS) for further information.



Quality guarantee

We have been awarded GB/T19001-ISO9001 Quality System Certificate.

All our products are inspected strictly.