

Comparison table for turning insert chipbreaker

Negative inserts

ISO	Machining range	ZCC-CT	SANDVIK	KORLOY	TaeguTec	WALTER	SECO	MITSUBISHI	SUMITOMO	KENAMETAL	DIJET	HITACHI	TUNGALOY	KYOCERA	VALANTE	
P	For extra finishing		QF LC	HU	FA FX	FP5	FF1 FF2	PK※FH, FY FP, FS	FB FA, FL	FF		FE	01※, TF, ZF 11	DP※, GP, PP, VF, XP XP-T, XF	F1	
	For finishing	DF	PF XF	HF	FG FM	MP3, FV5 NF3, NF4	MF2	LP, C SA, SH	FE, SU, LU, SX, SE	LF, FN	PF, UR UA, UT	BE, CE B, BH	NS, 27 TSF, AS, TQ	HQ, CQ PQ	F2(2B), F5(5C)	
	For finishing (Soft steel)	SF		HF	FC			SY					17	XQ, XS		
	For finishing (Wiper)	WGF	WL WF	HW	WS	NF	W-MF2	SW	LUW SEW	FW			AFW, ASW FW, SW	WF WP, WQ		
	For semi-finishing	DM PM	PM QM XM	HA HC HM	PC FT MT SM MP	MF3 MV5	MF3 M3 M5	MP MA MH	GU UG UX GE	P MN	PG UB	CT AB AY AE AH	NM, ZM TM, DM 37, AM 33, 38	PG, CJ, GS, PS HS, PT	F3, F4(8A), M2(2C), M3 M4, M5(5B), M6, M7, 55, M8	
	For semi-finishing	WGM	WMX WM		WT	NM	W-M6 W-M3 W-MF5	MW	GUW	MW RW				WE		
	(Wiper)	DR (Double-side)	PR, HM XMR		RT	NM6, RP5 NM9, RP7	MR7 MR6	RP GH	MU, MX ME, UZ	RN RP	UD, GG	Y, RE	TH	RH, GT		
	For light roughing	LR,DR (Single-side) HDR,HPR	QR PR HR MR	HR HH	RX, HD HY, HT RT, RH HZ, EH	NR6 NRF NRR	R5, R56 R4, R6 R7, PR9 R57, RR6 R8	HM, HL HZ, HX HV, HR	MP, HG HP, HU HW, HF	MR, RM RH	UC	TE, UE HX, HE H	TU, TRS TUS	PX	R3, R4, R6(9A) R7(9B), R9(9C)	

※ Periphery grinding type

Comparison table for turning insert chipbreaker

Negative inserts

ISO	Machining range	ZCC.CT	SANDVIK	KORLOY	TaeguTec	WALTER	SECO	MITSUBISHI	SUMITOMO	KENNAMETAL	DJJET	HITACHI	TUNGALOY	KYOCERA	VALANTE
M	For finishing	EF	MF	HA	SF	NF4, FM5	MF1	SH, LM	SU, EF	FP, LF※		MP, AB BH	SS	MQ GU	F1, F2(2B), F5(5C)
	For semi-finishing	EM	MM, QM XM, K	HS	ML, EM MM, VF	MM5 RM5 NM4	MF4	MS, ES GM, MM MA	EX, EG UP, GU HM	MP	SF, SG SZ	DE PV SE AH	SF, SA, SM, S	MS, MU SU, HU, ST, TK	F3, F4(8A), M2(2C), M3 M4, M5(5B), M6, M7, 55, M8
	For roughing	ER	MR	GS, HM	MT	NR4 NR5	M5, MR7 RR6	GH, HZ RM, HL	EM, MU MP	UP RP		AE	TH, SH		R3, R4, R6(9A) R7(9B), R9(9C)
K	For finishing	PM	KF			MK5	MF2, M3 MF5, M4	VA AH		FN		VA, AH	CF	KQ	F2(2B)
	For Semi-Finishing	PM	KM	Through chip-breaker, HM	MC	RK5 NM5	M5	V AE	UZ, GZ UX	RP, UN	PG	V, AE	CM	KG, C	M5(5B), M6, M8
	For roughing	Without chip-breaker	KR KRR	GR, HR GH	KT	RK7		RE			GG	RE		KH, GC	R3, R4, R7(9B)
S	For finishing	NF/NGF	SF SGF※		EA	NF4, NFT MS3	MF5, MF1 MF4	FJ※, LS MJ, MJ※	EF, SU※	FS, LF※ MS			HRF	MQ	F5(5C), M2(2C)
	For semi-finishing	NM	NGP※, SM			NMT, NMS	M1	MS	EG, EX SU※, UP	NGP※ UP, P		VI	HRM, SA HMM	SQ, MS MU, TK	M4, M5(5B), M7, 55
	For roughing	SNR	SR SMR		ET	NRS NRT	MR3 MR4	GJ RS	MU	RP				SG SX	

※ Periphery grinding type

Comparison table for turning insert chipbreaker

Positive inserts

ISO	Machining range	ZCC.CT	SANDVIK	KORLOY	TaeguTec	WALTER	SECO	MITSUBISHI	SUMITOMO	KENNAMETAL	DIJET	HITACHI	TUNGALOY	KYOCERA	VALANTE
P	For finishing	USF,SF, HF	PF, UF XF	HFP	FA, FG FX	PF4 FP4	FF1 F1	FV, SV FP, LP	FP, LU SU, SK	11, UF LF, FP		JQ	PF, PSF PS, PSS	GP, XP VF, PP	PF4 JQ, JZ
	For finishing (Wiper)		WF			PF2* PF, PF5*	W-F1	SW	LUW SDW	FW			WP		
	For semi-finishing	HM	UM, XM PM, PR XR	HMP C25	MT, PC	PS5 PM5 FP6	F2 MF2, M5	MV, MP	MU	MF, MP		FT	JE	HQ, XQ GK MF*	PM2 PM4
	For semi-finishing (Wiper)		WM		WT	PM	W-F2 W-M3	MW		MW					
M	For finishing	EF	MF	HFP		FM4	F1, F2	FM, LM	FC*, SI* LU, SU	MF		MP	PF, PSF PS, PSS	CF*, CK* GQ*, GF* MQ, SK	1A, 2A
	For semi-finishing	EM	MM	HMP C25		MM4 RM4		MM	MU	MP			PM	HQ GK	PM2 PM4
K	For semi-finishing	HM, HR without chip-breaker	KF KM KR	HMP C25		FK6	F1 M3, M5	MK without chip-breaker	MU without chip-breaker	without chip-breaker			CM without chip-breaker	without chip-breaker*	PM2 PM4
	For finishing/ For semi-	NGF						FS*, LS* FJ*, FS-P* LS-P*	SL* SL*	LF* HP*				MQ	PM2, 1A 2A
N	For general turning	LC, LH	AL	TAAK MA	FL	PM2, FN2 MN2	AL*	AZ*	AG	HP*	ALU ACB ASF		AL*	AH*	1L, 1A 2A

* Periphery grinding type

Grades comparison table

CVD coating

ISO Code	ZCC-CT	SANDVIK	KORLOY	TaeguTec	WALTER	MITSUBISHI	SUMITOMO	TUNGALOY	KYOCERA	DIJET	HITACHI	KENNAMETAL	SECO	ISCAR
P01		GC4305 GC4205		TT8115	WPP01 WPP05 WPP05S	UE6105	AC810P AC700G	T9105	CA510 CA5505	JC110V	HG8010	KCP05B KCP05 KC9105	TP0501 TP0500 TP1501 TP1500	IC9150 IC8150 IC428
	P10	YBC152 YBC151	NC310 NC3015	TT8115	WPP05 WAK20 WPP05S WPP10S	UE6105 MC6015 UE6110 MY5015	AC8015P AC810P AC700G AC820P AC2000	T9105 T9115	CA510 CA5505 CA515 CA5515 CA525 CA5525 CR9025 CA025P	JC110V JC215V	HG8010 HG8025 GM8020	KCP10B KCP10 KCP25 KC9110	TP1501 TP2501 TP2500	IC9150 IC8150 IC8250
P20		YBC251 YBC252	GC4315 GC4215 GC4325 GC4225	TT8125 TT5100	WPP20 WPP20S	MC6015 UE6110 MC6025 UE6020 MY5015	AC820P AC2000 AC8025P AC830P	T9115 T9125	CA515 CA5515 CA525 CA5525 CR9025 CA025P	JC110V JC215V	HG8025 GM8020 GM25	KCP25B KCP30B KCP25 KC9125	TP2501 TP2500	IC8250 IC9250 IC8350
	P30	YBC252 YBC351 YBC352	GC4335 GC4325 GC4025 GC4235	TT8125 TT5100 TT8135	WPP30 WAK30 WPP30S	MC6025 UE6020 MC6035 UE6035 UH6400	AC8035P AC830P AC630M	T9125 T9135 T6130	CA525 CA5525 CA530 CA5535 CR9025	JC325V JC215V	GM25 GM8035	KCP30B KCP30	TP3501 TP3500 TP3000	IC8350 IC9250 IC9350
P40		YBC351 YBC352	GC4335 GC4235	TT7100 TT8135	WPP30 WAK30 WPP30S	MC6035 UE6035 UH6400	AC8035P AC630M	T9135 T6130	CA530 CA5535	JC325V	GM8035 GX30	KCP40B KCP40 KC9140 KC9240	TP3501 TP3500 TP3000	IC9350
	M10		GC2015 GC2220	TT9215		MC7015 US7020	AC610M AC6020M	T9115	CA6515	JX605X JC110V		KCM15B KCM15	TM2000	IC6015 IC8250
M20		YBM151 YBM253	GC2220 GC2015	TT9215 TT9225		MC7015 US7020 MC7025	AC6020M AC610M AC6030M AC630M	T6120 T9125	CA6515 CA6525	JC110V	HG8025 GM25	KCM15 KC9225 KCM25B	TM2000	IC6015
	M30	YBM151 YBM251 YBM253	GC2025	TT9225 TT9235		MC7025 US735	AC6030M AC630M	T6130	CA6525	JX525X	GM8035 GX30	KCM25 KC9230 KCM35B	TM4000	IC6025
M40		YBM253	GC2025	TT9235		US735	AC6030M AC630M			JX525X	GX30	KCM35B KCM35 KC9240 KC9245	TM4000	IC6025
	K01	YBD052	GC3205 GC3210		WAK10 WPP01	MC5005 UC5015	AC405K AC410K	T5105	CA4505 CA4010 CA310	JC050W JC105V	HX3505	KCK05B KCK05	TK0501 TH1500	IC5005
K10		YBD102 YBD152	GC3205 GC3210	TT7005	WPP10 WAK10 WKK10S	MC5015 UC5115 MY5015	AC405K AC410K AC415K AC420K AC700G	T5105 T5115 T5115	CA315 CA4515 CA4010 CA4115	JC108W JC050W JC105V JC110V	HX3515 HG8010	KCK15B KCK15 KCK20 KC9315 KCK20B	TK0501 TH1501	IC5005 IC5010 IC428
	K20	YBD152 YBD252	GC3225 GC3215	TT7310	WPP20 WAK20 WKK20S	MC5015 UC5115 UE6110 MY5015	AC415K AC420K AC700G AC820P	T515 T5115 T5125	CA320 CA4515 CA4115 CA4120	JC108W JC110V JC215V	HG8025 GM8020	KCK20B KCK20 KC9325 KCPK05	TK1501	IC5010 IC8150
K30			GC3225		WAK30 WKP30S	UE6110	AC820P	T9115 T5125		JC215	HG8025 GM8020	KCPK05		
	S01		S05F			US905			CA6515 CA6525 CA6535		HS9105 HS9115			
Application		Turning												

Grades comparison table

Application	ISO Code	ZCC.CT	SANDVIK	KORLOY	TaeguTec	WALTER	mitsubishi	SUMITOMO	TUNGALOY	KYOCERA	DIJET	HITACHI	KENNAMETAL	SECO	ISCAR
P	P10					WKP25					JC730U			MP1500	IC9080 IC4100 IC9015
	P20	YBM251 YBM253	GC4220		TT7800	WKP25 WKP35 WKP35S	F7030 MC7020	ACP100	T3225		JC730U	GX2140		MP1500 MP2500	IC5500 IC5100 IC520M
		YBM351 YBC302 YBM251 YBM253	GC4230	NCM335	TT7800	WKP25 WKP35 WKP35S	F7030 MC7020	ACP100	T3130 T3225				GX2140 GX2160	KCPK30 KC930M	MP2500
	P40	YBC302	GC4240		TT7800	WKP35 WKP35S						GX2030 GX30 GX2160	KC935M KC530M		
M	M10														IC9250
	M20	YBM251 YBM253			TT7800		F7030 MC7020	ACP100 ACM200	T3225	CA6535	JC730U	AX2040 GX2140 GX2160	KC925M	MP2500 MM4500	IC520M IC9350
		YBM351	GC2040	NCM335	TT7800		F7030 MC7020	ACP100	T3130 T3225	CA6535			AX2040 GX2140 GX2160 GX30	MP2500 MM4500	IC9350 IC4050
	M40	YBC351										GX2030 GX2160 GX30	KC930M KC935M		IC635
K	K01					WKP15					JC600				
	K10	YBD152		NCM310	TT6800	WKP15 WKP25	MC5020	ACK100	T1215 T1115	CA420M	JC600				
		YBD252	GC3220 GC3330 K20W	NCM320	TT6800	WKP15 WKP25 WKP35 WKP35S	MC5020	ACK200	T1215			JC610		KC915M	MP2500 MK2000
	K30	YBD252	GC3330 GC3040			WKP25 WKP35 WKP35S					JC610	GX30	KC920M KC925M KCPK30 KC930M KC935M	MP2500 MK2000 MK3000	IC4100 IC4050 IC520M

Grades comparison table

ISO Code	ZCC.CT	SANDVIK	KORLOY	TaeguTec	WALTER	MITSUBISHI	SUMITOMO	TUNGALOY	KYOCERA	DIJET	HITACHI	KENAMETAL	SECO	ISCAR
P	P01				WXN10				PR1005					
	P10	YBG102	GC1125		WSM10 WSM21	VP10MF MS6015		AH710	PR1005 PR930 PR1025 PR115 PR1225 PR1425			KCU10 KC5010 KC5510 KU10T	CP200 TS2000	IC250 IC507 IC570 IC807 IC907 IC908
	P20	YBG202	GC1125 GC15	TT9030	WSM21 WSM20	VP10RT VP20RT VP15TF VP20MF MS6015	AC520U	AH120 AH730 AH725 SH725 SH730 J740	PR930 PR1025 PR1115 PR1225 PR1425 PR1535		IP2000	KCU10 KC5025 KC5525 KU25T	TS2500	IC1007 IC250 IC308 IC507 IC807 IC808 IC907 IC908 IC1008 IC1028 IC3028
	P30	YBG202	GC1125	TT9030 TT8020	WSM30	VP10RT VP20RT VP15TF VP20MF	AC1030U AC530U	AH725 AH120 AH730 SH730 GH330 GH730 J740 SH725	PR1025 PR1225 PR1425 PR1535 PR1625		IP3000	KCU25 KC5525 KU25T	CP500	IC228 IC250 IC328 IC330 IC354 IC528 IC1008 IC1028 IC3028
P40			PC240	TT8020			AH120 AH725 AH645	PR1535					CP500 CP600	IC228 IC328 IC528 IC928 IC1008 IC1028 IC3028
M	M10	YBM215	GC1115 GC15 GC1105		WSM10 WSM10S	VP10MF MS6015		AH630	PR1025 PR1225 PR1425	JC5003 JC8015	IP050S	KCU10 KC5010 KC5510	CP200 TS2000	IC354 IC507 IC520 IC807 IC907 IC1007 IC5080T
	M20	YBG202 YBG205 YBM215	GC1115 GC15 GC1125	TT9030 TT8010	WSM20 WSM21 WSM20S	VP10RT VP20RT VP15TF VP20MF	AC520U	AH725 AH120 SH730 AH630 SH725	PR1025 PR1125 PR1225 PR1425 PR915 PR930 PR1535	JC5003 JC5015 JC8015 JC5118	IP100S	KCU10 KC5010 KC5510	TS2500 CP500	IC354 IC808 IC908 IC1008 IC1028 IC3028 IC5080T
	M30		GC1125 GC2035	TT8020	WSM30 WSM30S	VP10RT VP20RT VP15TF VP20MF MP7035	AC520U AC530U AC1030U AC6040U	AH725 AH120 SH730 J740 AH645 SH725	PR1125 PR1425 PR1535	JC5015 JC8015 JC5118		KCU25 KC5525 KU25T	CP500 CP600	IC228 IC250 IC328 IC330 IC1008 IC1028 IC9080T
	M40		GC2035			MP7035	AC530U AC6040U	AH645	PR1535	JC5118				
Application	Turning													

Grades comparison table

Application	Turning													
ISO Code	ZCC.CT	SANDVIK	KORLOY	TaeguTec	WALTER	MITSUBISHI	SUMITOMO	TUNGALOY	KYOCERA	DIJET	HITACHI	KENAMETAL	SECO	ISCAR
K01							AH110							
K10		GC15	PC205K	TT9030			AC510U	GH110 AH110				KCU10 KC5010 KC5510	CP200 TS2000	IC350 IC910 IC1008
K20			PC215K	TT9030		VP10RT VP20RT VP15TF		AH120				KCU15 KCU25	CP200 TS2000 TS2500	IC228 IC350 IC808 IC830 IC908 IC1007 IC1008
K30				TT9030		VP10RT VP20RT VP15TF		AH120 GH130				KCU25 KC5525 KU25T	CP500	IC228 IC350 IC808 IC830 IC908 IC1007 IC1008
S01					WSM10	MP9005 VP05RT		AH8005	PR005S PR1305	JC5003 JC8015	JP9105		TH1000	IC507 IC807 IC903 IC806 IC5080T
S10		GC1105 GC15		TT8010	WSM10 WSM10S	MP9005 MP9015 VP10RT	AC510U	AH8005 AH8015	PR005S PR1310 PR015S	JC5003 JC5015 JC8015	JP9115	KCU10 KC5010 KC5410 KC5510	CP200 CP250 TS2000 TS2050 TS2500 TH1000	IC228 IC300 IC328 IC808 IC908 IC928 IC3028 IC806 IC9080T
S20		GC1125		TT8020	WSM20 WSM20S WSM21	MP9005 MT9015	AC510U AC520U	AH8015	PR015S PR1125 PR1325	JC5015 JC8015 JC5118		KCU10 KCU25 KC5025 KC5525	TS2500 CP500	IC928 IC830
S30		GC1125			WSM30 WSM30S	VP15TF MP9025 VP20RT	AC1030U	AH630 AH7025	PR1125 PR1535	JC5118		KC5525	CP600	

Grades comparison table

Application	ISO Code	ZCC.CT	SANDVIK	KORLOY	TaeguTec	WALTER	MITSUBISHI	SUMITOMO	TUNGALOY	KYOCERA	DIJET	HITACHI	KENNAMETAL	SECO	ISCAR	
P Milling	P01				TT2510 TT5505				AH110 AH710		JC8003	ATH80D ATH08M TH308 PN208 JP4105 PN15M			IC903	
					TT2510 TT5505 TT5515 TT7080	WXH15 WXM15		ACP200	AH120 AH725	PR830 PR1225	JC8003 JC8015 JC5015 JC5118	PN15M PN215 PCA12M JP4115	KC505M KC715M KC510M KC515M			IC250 IC350 IC808 IC810 IC900 IC903 IC908 IC910 IC950
	P20				TT2510 TT5505 TT5525 TT7080 TT9030 TT9080	WHH15 WXM15	MP6120 VP15TF	ACP200	AH725 AH120 AH3135 AH9030	PR830 PR1225 PR1230 PR1525	JC5015 JC5040 JC6235 JC8015 JC5118 JC6235 JC7560P JC8118P	CY9020 JP4120 CY150	KC522M KC525M KC527M KC610M KC620M KC635M KC715M KC720M KC730M KTPK20	F25M MP3000		IC250 IC300 IC328 IC330 IC350 IC808 IC810 IC830 IC900 IC908 IC910 IC928 IC950 IC1008
					TT5525 TT7080 TT8020 TT8080 TT9030 TT9080	WSP45 WSP46	MP6120 VP15TF MP6130 VP30RT	ACP200 ACP300	AH725 AH120 AH130 AH3135 AH6030	PR1230 PR1525	JC6235 JC7560 JC8050 JC7560P JC5015 JC8118 JC5040 JC8118P JC8015 JC5118	JS4045 CY250 CY250V CY25 HC844	KC735M KC725M KC530M KC537M KCPM40	F25M MP3000 F30M		IC250 IC300 IC328 IC330 IC350 IC830 IC845 IC900 IC928 IC950 IC1008
	P40				TT8020	WSP45 WSP46	VP30RT	ACP300	AH140	PR1525	JC6235 JC7560 JC8050 JC7560P JC5040 JC8118 JC5118 JC8118P JC5118	JS4060 PTH30E PTH40H JX1060 JS4060	KC735M KC537M KCPM40	F40M T60M		IC300 IC328 IC330 IC830 IC928 IC1008
					TT8020	WSP45 WSP46	VP30RT	ACP300	AH140	PR1525	JC6235 JC7560 JC8050 JC7560P JC5040 JC8118 JC5118 JC8118P JC5118	JS4060 PTH30E PTH40H JX1060 JS4060	KC735M KC537M KCPM40	F40M T60M		IC300 IC328 IC330 IC830 IC928 IC1008

Grades comparison table

Application	ISO Code	ZCC.CT	SANDVIK	KORLOY	TaeguTec	WALTER	MITSUBISHI	SUMITOMO	TUNGALOY	KYOCERA	DIJET	HITACHI	KENNAMETAL	SECO	ISCAR
M	M01											PN08M PN208			IC907
	M10	YBG252	GC1025 GC1130 GC1030 GC1010		TT5525 TT9030 TT9080	WXM15		ACM100	AH725	PR1225		PN15M PN215	KC735M KC515M		IC903
	M20	YBG205 YBG202 YBG9320 YBG252	GC1025 GC1030 GC1040 GC2030 S30T		TT8020 TT8080	WXM15 WSM35 WSM36	VP15TF MP7130 MP7030 VP20RT	ACP200	AH725 AH130 AH6030 AH3135	PR1025 PR1225	JC5015 JC5118 JC8015	JP4120	KC610M KC5635M KC730M KC720M KC522M KC525M KCPM40 KCPK20	F25M MP3000	IC250 IC300 IC808 IC830 IC900 IC908 IC928 IC1008
	M30	YBG302	S30T GC1040 GC2030	PC9530	TT8020 TT8080	WSM35 WSM36 WSP45 WSP46	VP15TF MP7130 MP7030 VP20RT MP7140 VP30RT	ACP200 ACP300 ACM300	AH130 AH3135	PR830 PR1225 PR1525 PR1535	JC5015 JC7560 JC8015 JC7560P JC8050 JC8118 JC5118 JC8118P	JS4045 CY250 HC844	KC537M KC725M KC735M KCPM40 KC530M	F30M F40M MP3000	IC250 IC300 IC328 IC330 IC830 IC928 IC1008 IC380 IC882
	M40	YBG302			TT8020	WSM35 WSM36 WSP45 WSP46	MP7140 VP30RT	ACP300 ACM300	AH140	PR1525 PR1535	JC5015 JC7560 JC5118 JC7560P JC8050 JC8118 JC8118P	PTH30E PTH40H JM4160		F40M	IC250 IC300 IC328I C330 IC1008 IC882

Grades comparison table

Application	ISO Code	ZCC-CT	SANDVIK	KORLOY	TaeguTec	WALTER	mitsubishi	SUMITOMO	TUNGALOY	KYOCERA	DIJET	HITACHI	KENAMETAL	SECO	ISCAR	
Milling	K	K01			TT6080		MP8010		AH110		JC8003	ATH80D ATH08M TH308			IC350 IC810 IC830 IC900 IC910 IC928 IC950 IC380 IC1008	
		K10	YBG102 YBG252	GC1010	PC205K	TT6080	WHH15 WXM15 WKK25	MP8010		AH110 AH120	PR1210 PR1510	JC8015	ATH10E TH315 CY100H	MK2050	MK2050	IC350 IC808 IC810 IC830 IC900 IC908 IC910 IC928 IC950 IC1008
		K20	YBG152	GC1010 GC1020	PC215K		WHH15 WXM15 WKK25	VP15TF VP20RT	ACK300	AH120 AH9030	PR1210 PR1510	JC5015 JC8015 JC6235	CY150 JP4120 CY9020 PTH13S	KTPK20 KC514M KC610M KC520M KC620M KC524M	MK2000 MK2050	IC350 IC808 IC810 IC830 IC900 IC908 IC910 IC928 IC950 IC1008
		K30	YBG152	GC1020		WKK25	VP15TF VP20RT	ACK300	AH120	AH110 AH710	PR1210	JC6235 JC5015 JC8015 JC8118 JC8118P	CY250 JS4045	KC522M KC725M KC524M KC735M KC537M	MK2050	IC350 IC808 IC830 IC908 IC928 IC950 IC1008
		S01										JC8003 JC8015 JC5118	PN08M PN208			IC907 IC908 IC808 IC903
		S10	YBG202 YBS203	GC1130 GC1010 GC1030 GC2030		TT9030 TT9080 TT8080		MP9120 VP15TF	EH520Z EH20Z ACM100	AH120 AH725	PR1210	JC8003 JC8015 JC5118 JC5015	JS1025 JP4120	KC510M	MS2050	IC903 IC907 IC908 IC840 IC910 IC808
		S20	YBS203 YBS303	S30T GC2030 GC1030 GC1130		TT8020 TT8080	WSM35 WSM36	MP9120 VP15TF MP9130 MP9030	EH520Z EH20Z ACK300 ACP300	AH725 AH130 AH6030	PR1535	JC8050 JC8015 JC5118 JC5015	PTH30H	KC522M KC525M KCSM30 KCPM40	MS2050	IC300 IC908 IC808 IC900 IC830 IC928 IC328 IC330 IC840 IC882 IC380
		S30	YBS303	GC2030 GC1040		TT8020	WSM35 WSM36 WSP45 WSP46		ACM300 ACP300	AH130	PR1535	JC9050 JC7960 JC5118	JM4160	KC725M KCPM40	MS2050 F40M KCSM40	IC830 IC882 IC928
		H01				TT2510 TT5505		MP8010 VP05HT		AH110		JC8003 DH103 JC8008 DH102				IC903
		H10		GC1130 GC1010 GC1030		TT5515 TT6080	WHH15	VP15TF VP10H		AH120		JC8003 JC8008 JC8015 JC5118 JC8118P	JP4105 TH308 PTH08M ATH08M ATH80D	KC505M KC510M	MH1000 F15M	IC900 IC808 IC907 IC905
		H20		GC1030 GC1130		TT5515 TT6080	WHH15	VP15TF		AH120 AH725 AH9030		JC8015 JC5118 JC8118P	JP4115 TH315		F15M	IC900 IC808 IC908 IC380 IC1008
		H30											JP4120		MP3000 F30M	IC380 IC900 IC1008

Grades comparison table

Application	ISO Code	ZCC.CT	SANDVIK	KORLOY	TaeguTec	WALTER	MITSUBISHI	SUMITOMO	TUNGALOY	KYOCERA	DIJET	HITACHI	KENAMETAL	SECO	ISCAR	
Turning	P	P01		CC105 CN100	PV3010 CT3000	WALTER	AP25N* VP25N*	T110A T1000A	NS520	TN30 TN610 PV710* PV30* TN6010 PV7010*	LN10 CX50				IC20N IC520N*	
			P10		CC15 CN200 CT10	PV3010 CT3000	WCE10	NX2525 AP25N* VP25N*	T1200A T2000Z* T1500A T1500Z*	GT9530* J9530	TN60TN610 PV710* PV60* TN6010 PV7010*	CX50 CX75 PX75*	CZ25*	KT315 KT125	TP1020 TP1030* CM CMP*	IC20N IC520N* IC530N*
				P20			PV3010 CT3000	WCE10	NX2525 AP25N* VP25N* NX3035 MP3025*	T1200A T2500A T2000Z* T3000Z* T1500A T1500Z*	GT9530* NS9530 J9530	TN60 PV60* TN620 PV720* TN6020 PV7020* PV7025*	CX75 PX75* PX90*	CH550	KT325 KT1120 KT5020*	TP1020 TP1030*
	P30						MP3025* VP45N*	T3000Z*	NS9530	PV7025* PV90*	PX90*				IC75T	
	M	M10	YNG151 YNG151C		PV3010 CT3000		NX2525 AP25N VP25N	T110A T1000A T2000Z T1500Z	NS520	TN60 PV60* TN620 PV720* TN6020 PV7020*	LN10 CX50		KT125	TP1020 TP1030* CM CMP*		
					PV3010 CT3000		NX2525 AP25N* VP25N*	T1200A T2000Z T1500A T1500Z	GT9530 NS9530 J9530	TN90 TN6020 TN620 PV720* PV90* PV7020* PV7025*	CX50 CX75 PX75	CH550				
		M30						NS9530								
		M40														
	K	K01		CC105 CN100	PV3010 CT3000		NX2525 AP25N*	T110A T1000A T2000Z* T1500Z*	NS520	TN30 PV30* PV7005* TN610 PV710* TN6010 PV7010*	LN10					
				CC115	CT3000		NX2525 AP25N*	T1200A T2000Z* T1500A T1500Z*	GT9530 NS9530 J9530	TN60 PV60* TN6020 TN620 PV720* PV7020* PV7025*	LN10			KT325 KT125		
		K20					NX2525 AP25N*	T3000Z*	NS9530		CX75					
		K30														

Grades comparison table



Application	ISO Code	ZCC.CT	SANDVIK	KORLOY	TaeguTec	WALTER	mitsubishi	SUMITOMO	TUNGALOY	KYOCERA	DIJET	HITACHI	KENAMETAL	SECO	ISCAR	
Milling	P01				CT3000											
	P10	YNG151		CN100	CT3000		NX2525		NS740	TN60	CX75	MZ1000*		C15M	IC30N	
		YNG151C				C77000										
	P20		CT530	CN20	CT3000		NX2525	T250A	NS740	TN100M	CX75 CX90	CH550	KT530M HT7	C15M	IC30N	
					CT7000		MX3020			TN60		CH7030	KT605M	MP1020		
	P30			CN30	CT7000		MX3030	T250A			CX90 CX99	MZ1000*			IC30N	
							NX4545	T4500A				MZ2000*				
	M01															
	M10	YNG151				CT3000		NX2525	NS740	TN60						IC30N
		YNG151C				C77000										
	M20		CT530			CT7000		NX2525	NS740	TN100M	CX75	CH550	KT530M	C15M	IC30N	
							MX3020					CH7030	HT7			
	M30							MX3030			CX90 CX99	MZ1000*	KT605M			
						NX4545	T250A				MZ2000*					
M40																
K01																
K10	YNG151				CT7000		NX2525	NS740	TN60							
	YNG151C															
K20							NX2525									
										CX75		KT530M HT7				
K30																

Grades comparison table

PCBN grade

Application	ISO Code	ZCC.CT	SANDVIK	KORLOY	TaeguTec	WALTER	MITSUBISHI	SUMITOMO	TUNGALOY	KYOCERA	DIJET	SECO	Element Six
Turning	H	H01				WCB30	BC8105 BC8110 MBC010 MB810	BNC100 BNX10 BN1000	BXM10 BX310	KBN050M KBN10M KBN510		CBN060K	
				KB320 KB330 KB420	KB50 TB650	WCB30 WCB50	BC8110 MBC020 BC8120 BC8020 MB8025	BNC160 BNX20 BN2000	BXM10 BX330 BX530	KBN25M KBN525	JBN300	CBN010	DBC50
				CB7015			MBC020 BC8120 BC8020 MB8025	BNC200 BNX25 BN250	BXA20 BXM20 BX360	KBN30M	JBN245	CBN150 CBN160C	DBN45
		H20			TB650	WCB50 WCB80	BC8130 MB835	BNC300 BN350	BXC50 BX380	KBN35M		CBN150 CBN160C	
		H30					MB730	BN700 BN7000	M714B			CBN170	
		S01			KB90		MB710 MB5015	BN500 BNC500	BX930 BX910 BX870				
		K01			KB90	WCB90	MB730 MB4020	BN700 BN7500	BX470 BX480 BX950	KBN60M	JBN795	DBA80	
		K10			KB90A	WCB50 WCB80	MB730 MB4020	BN700 BN7000	BXC90 BX90S	KBN60M	JBN500	CBN200	
		K20				WCB80	BC5030 MBS140	BNS800	BX90S BXC90	KBN900		CBN300 CBN400C CBN500	
		K30					CB7925						

PCD grade

Application	ISO Code	ZCC.CT	SANDVIK	KORLOY	TaeguTec	WALTER	MITSUBISHI	SUMITOMO	TUNGALOY	KYOCERA	DIJET	SECO	Element Six
Turning	N	N01	CD05			WCD10	MD205	DA90	DX180 DX160	KPD001	JDA30 JDA735	PCD05	CTH025
				DP90 DP150 DP200	KB500	WCD10	MD220	DA150	DX140	KPD010		PCD10	CTB010
	N10	CD10		KB300	WCD10	MD220	DA2200	DX120		JDA715	PCD20	CTB002	
	N20			KB100	WCD10	MD230	DA1000	DX110		JDA10	PCD30 PCD30M		

Cemented carbide material

Application	ISO Code	ZCC.CT	SANDVIK	KORLOY	TaeguTec	WALTER	MITSUBISHI	SUMITOMO	TUNGALOY	KYOCERA	DIJET	HITACHI	KENNAMETAL	SECO	ISCAR		
Turning	P01			ST05													
	P10			ST10	P10			ST10P	TH10		SRT				IC70		
	P20		SMA	ST20	P20		UT120T	ST20E	KS20		SRT DX30	EX35			IC70 IC50M		
	P30		SM30	ST30A	P30		UT120T	A30	KS15F UX30	PW30	SR30 DX30	EX35			IC50M IC54		
	P40				P40			ST40E	TX40		SR30	EX45			IC54		
	M10		H10A	U10	M10			EH510 U10E	TH10		UMN	WA10B	KU10 K313 K68	890	IC07		
	M20		H13A	U20	M20		UT120T	EH520 U2	KS20		DX25 UMS	EX35	KU10 K313 K68	HX	IC07 IC08 IC20		
	M30		H10F SM30	ST30A			UT120T	A30	UX30		DX25 UMS	EX45		883	IC08 IC20 IC28		
	M40			U40	M40				TU40		UM40	EX45			IC28		
	K01			H02	UF1		HT105T	H1 H2	KS05F		KG03	WH05	KU10 K313 K68				
	K10	YD201	H10 HM	H01	K10		HT110	EH10 EH510	TH10	KW10 GW15	KG10 KT9	WH10	KU10 K313 K68	890	IC20		
	K20	YD201	H13A	G10	K20		UT120T	G10E EH20 EH520	KS15F KS20	GW25	CR1 KG20		KU10 K313 K68	HX	IC20		
	K30			G3	K30		UT120T	G10E			KG30			883			
	N01		H10 H13A					H1 H2	KS05F	KW10							
	N10	YD201		H01	K10		HT110	EH10 EH510	TH10	KW10 GW15	KT9	WH10	KU10 K313 K68	H15	IC08 IC20		
	N20	YD201			K20			G10E EH20 EH520	KS15F		CR1	WH20	KU10 K313 K68	HX	IC08 IC20		
	N30										KG30			H25			
	S01						RT9005			SW05	KG03						
	S10	YD201	H10 H10A H10F H13A	H01	K10		RT9005 RT9010 MT9015	EH10 EH510	KS05F TH10	SW10	FZ05 KG10	WH135	KU10 K313 K68	HX	IC07 IC08		
S20	YD201			K20		RT9010 TF15	EH20 EH520	KS15F KS20	SW25	FZ15 KG20		KU10 K313 K68	H25	IC07 IC08			
S30						TF15				KG30							

Grades comparison table

Cemented carbide material

Application	ISO Code	ZCC.CT	SANDVIK	KORLOY	TaeguTec	WALTER	MITSUBISHI	SUMITOMO	TUNGALOY	KYOCERA	DIJET	HITACHI	KENAMETAL	SECO	ISCAR		
Milling	P10		S1P								SRT						
	P	P20		ST20	P30		UT120T	A30N				SRT DX30	EX35	K125M		IC50M IC28	
		P30		ST30A	P30		UT120T	A30N	UX30	PW30	SR30 DX30	EX35	GX			IC50M IC28	
		P40	YC30S		ST40					PW30	SR30	EX45				IC28	
		M10			U10	M10											
	M20			U20	M20						UMN						
	M	M30	YC30S					UT120T	A30N			DX25 UMS	EX35				IC08 IC20
		M40			U40	M40		UT120T	A30N			DX25 UMS	EX35				IC08 IC28
	K	K01	YD051		H01	K10		HT105T				KG03		K115M K313			
		K10	YD051		H05 H10	K10	WK10	HT110	G10E	TH10	KW10 GW25	KG10	WH10	K115M K313			IC20
		K20	YD201	H13A	G10			UT120T	G10E		GW25	KT9 CR1 KG20			HX		IC20
		K30						UT120T				KG30					

Insert index

A

ANGX-GM	287
ANGX-LH	287
APKT-ALH	265
APKT-APF	265
APKT-APM	265

C

CCGT-SF	58
CCGW	87
CCGW-2	87
CCGX-LC	59
CCGX-LH	59
CCMT-EF	58
CCMT-EM	59
CCMT-HF	58
CCMT-HM	58
CCMT-HR	59
CCMX	88
CNEG-NF	30
CNGA	78
CNGA-2	78
CNGN	79
CNMA	34
CNMG	34
CNMG-DF	30
CNMG-DM	31
CNMG-DR	32
CNMG-EF	30
CNMG-EM	32
CNMG-ER	33
CNMG-NM	32
CNMG-PM	31
CNMG-SF	30
CNMG-SNR	33
CNMG-WGF	30
CNMM-DR	33

CNMM-ER	33
CNMG-WGM	32
CPGT-SF	70

D

DCGT-SF	60
DCGW	89
DCGW-2	89
DCGX-LC	61
DCGX-LH	61
DCMT-EF	60
DCMT-EM	60
DCMT-HF	60
DCMT-HM	60
DCMT-HR	61
DCMX	89
DNEG-NF	36
DNEG-NGF	36
DNGA	80
DNGA-2	80
DNGN	81
DCMT-HR	61
DNMA	40
DNMG	40
DNMG-DF	35
DNMG-DM	38
DNMG-DR	39
DNMG-EF	36
DNMG-EM	38
DNMG-ER	39
DNMX-WGF	35
DNMX-WGM	37
DNMG-NM	39
DNMG-PM	37
DNMG-SF	35
DNMG-SNR	40
DNMM-DR	39

DNMM-ER	40
DPGT-SF	71

L

LNKT□PNR-GM	282
LNKT□PNR-GL	282
LNKT-ZR	230
LT□□□□W-□□□GM	156
LT□□□□N-□□□GM	157
LT□□□□N-A(G)(N)□□(P*)	158
LT□□□□N-W(G)(N)□□(P*)	158
LT□□□□W(N)-□□W	159
LT□□□□W(N)-□□UN	160
LT□□□□W(N)-□□BSPT	161
LT□□□□W(N)-□□□NPT	162

O

OFKR-DF	212
OFKR-DM	212
OFKT-DF	209
OFKT-DM	209
OFKT-LH	209
ONHU-GH	220
ONHU-GL	220
ONHU-GM	220

P

PNEG-GL/GM/GH	223
PNEG-CF/CM/CR/PF/PM/PR	227
PNEG-KH/KL/KM	228
PNGU-GR/HDR	232

R

RCKT-DM	247
RCKT-DR	247
RCKT-ER	247
RCKT-NM	247
RDKT□MO-NM	254
RDKW	254

Insert index

RNGN.....	86
ROHX.....	289
RPMW	261
RT□□□□W-□□□GM	156
RT□□□□N-□□□GM	157
RT□□□□N-A(G)(N)□□(P*)... ..	158
RT□□□□W-A(G)(N)□□(P*)... ..	158
RT□□□□W(N)-□□W	159
RT□□□□W(N)-□□UN	160
RT□□□□W(N)-□□BSPT.....	161
RT□□□□W(N)-□□NPT	162
RT□□□□W-□□UNJ.....	163
RT□□□□W(N)-□□AC	164
RT□□□□W(N)-□□STAC.....	165
RT□□□□W(N)-□□AP□□□	166
RT□□□□W(N)-□□RD	167
RT□□□□W-□□BUT□.....	168
RT□□□□W-□□□GMB	169
RT□□□□N-□□□GMB.....	170
RT□□□□W(N)-A(G)□□B	171
RT□□□□W(N)-□□WB.....	172
RT□□□□W(N)-□□UNB	173
RT□□□□W(N)-□□BSPT	174
RT□□□□W(N)-□□□NPTB... ..	175

S

SCGX-LC	63
SCGX-LH	63
SCMT	63
SCMT-EF	62
SCMT-EM	62
SCMT-HF	62
SCMT-HM	62
SCMT-HR	62
SDMT-DM/PM/NM	296
SEET-CF	203
SEET-CM	203

SEET-CR	203
SEET-DF	203
SEET-DM	203
SEET-DR	203
SEET-EF	203
SEET-EM	203
SEET-LH	203
SEET-W.....	203
SEET□PER-APF	238
SEET□PER-APM	238
SEET□PER-APR.....	238
SEK(E)N	206
SEKR	206
SNEG-GM/HGR/-W	217
SNGN.....	82
SNGN.....	46
SNUN	46
SNMA.....	45
SNMG.....	45
SNMG-DF	41
SNMG-DM.....	42
SNMG-DR	43
SNMG-EF	41
SNMG-EM	42
SNMG-ER	44
SNMG-NM.....	42
SNMG-PM.....	41
SNMG-SF	41
SNMG-SNR	44
SNMM	45
SNMM-DR.....	43
SNMM-ER	44
SPGT-PM/EM	432
SPMT	305
SPMX-EM/LM/XM	422

T

TCGW	90
TCGW-3.....	90
TCGX-LC	65
TCGX-LH	66
TCMT.....	66
TCMT-EF	64
TCMT-EM	64
TCMT-HF	64
TCMT-HM	65
TCMT-HR	65
TCMX.....	91
TNGA.....	83
TNGA-3	83
TNMA.....	51
TNMG.....	50
TNMG-DF	47
TNMG-DM.....	48
TNMG-DR	49
TNMG-EF	47
TNMG-EM	49
TNMG-ER	49
TNMG-PM	48
TNMG-SF	47
TNMG-SNR	50
TNMM.....	51
TNMM-DR.....	49
TNMX-WGF	47
TNMX-WGM	48
TPGH	72
TPGT-SF	72
TPKN	236

V

VBET-NGF.....	69
VBGT-HR	69
VBGW	92
VBGW-2.....	92

Insert index

VBMT-EF	69
VBMT-EM	69
VBMT-HF	69
VBMT-HM	69
VBMT-HR	69
VBMT-SNR	69
VBMX	92
VCGT-HF	67
VCGT-NGF	67
VCGT-SF	67
VCGW	93
VCGX-LC	68
VCGX-LH	68
VCMX	93
VNEG-NF	52
VNEG-NGF	52
VNGA	84
VNGA-2	84
VNMG	53
VNMG-DF	52

VNMG-DM	53
VNMG-EF	52
VNMG-EM	53
VNMG-NM	53
VNMG-PM	53
VNMG-SF	52
VNMG-SNR	53

W

WNEG-NF	55
WNGA-3	85
WNHU-GM	245
WNHU-LH	245
WNMA	57
WNMG-DF	54
WNMG-DM	55
WNMG-DR	57
WNMG-EF	55
WNMG-EM	56
WNMG-NM	56
WNMG-PM	56

WNMG-SF	54
WNMG-SNR	57
WNMG-WGF	54
WNMG-WGM	55
WPGT/-PM	299

Z

ZIMF-SM	129
ZIGQ-NF	132
ZIGQ-NM	131
ZOHX-GF	291
ZOHX-GM	291
ZP□□-MG	127
ZP□S-MG	127
ZR□□-EG	131
ZR□□-MG	130
ZR□□-NM	130
ZT□□-EG	129
ZT□□-MG	128
ZT□□-MM	128
ZT□S-MG	128

Tool index

1588SL12/20/30C	399-404
-----------------------	---------

A

AL-2B	329
AL-2E	328
AL-3E	328
AL-2R-ALR	329

B

BMR02	288
BMR04	290

C

CMA01	303
CMD01	304
C□□□□□-Q□□DR/L	143

D

DCLNR/L	96
DDJNR/L	97
DSBNR/L	97
DTGNR/L	98

DVJNR/L	99
DVVNN	98
DWLNR/L	99

E

EMP01	263-264
EMP02	269
EMP03	272
EMP04	273
EMP09	277-281

Tool index

EMP13 285-286

F

FMA01 200-201

FMA02 202

FMA03 205

FMA04(OFKT05□□) 208

FMA04(OFKR07□□) 211

FMA11 215-216

FMA12 219

FMA14 222

FMD02(PN11) 225-226

FMD03 229

FMD04 231

FME04 233

FMP01 235

FMP02 237

FMP03 240

FMP12 243-244

FMR01 246

FMR02 249

FMR03 253

FMR04 256

FMR05 259-260

G

GD03 365-394

GD03C 365-394

GD05 365-394

GD05C 365-394

GD08C 365-394

GM-2B 320

GM-2BL 320

GM-2E 316

GM-2EL 316

GM-2ES 322

GM-2R 322

GM-3E 317

GM-3EL 317

GM-4B 321

GM-4BL 321

GM-4E 318

GM-4EL 318

GM-4E-S 319

GM-4EL-S 319

GM-4R 323

GM-4W 323

H

HMX-2B 327

HMX-2BL 327

HMX-4E 326

HMX-4EL 326

M

MCLNR/L 100

MDJNR/L 100

MTJNR/L 101

MTJNR/L□□-Z 101

MVJNR/L 102

MWLNR/L 102

P

PCLNR/L 109

PDUNR/L 109

PSKNR/L 110

PTFNR/L 110

PWLNR/L 111

Q

QECDR/L 136

QE□S□□-□□R/L 136

QE□S□□N 139

QE□□R/L 134-135

QF□□R/L-H 139-140

QF□□R/L-L 141

QX□□DR/L 137

QZS□ 138

S

SCLCR/L 103

SCLCR/L 112

SDJCR/L 103

SDUCR/L 113

SNR□□□□B 180

SNR/L 179

STFCR/L 114

STGCR/L 106

SVJBR/L 104

SVJCR/L 105

SVVBN 104

SWR□□□□B 180

SWR/L 178

U

UM-4E 331

UM-4EL 331

UM-4R 332

V

VSM-4E 334

VSM-4EFP 335

VSM-4EL 334

VSM-4R 335

VSM-4RFP 336

VSM-4RL 336

X

XMR01 294-298

Z

ZSD02/03/04/05 414-421

ZTD03/04/05 426-431



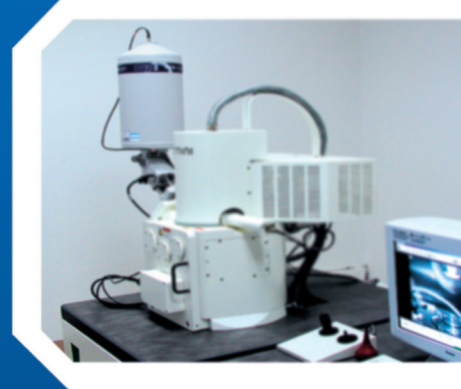
Safety & environmental protection

Cemented carbide products are hard and brittle. They are easily damaged by improper handling and clamping. Be careful when using carbide tools.

When cutting with carbide tools, cooling liquids may be used, and workpiece materials will be formed into chips during the machining process. Both the cooling agent and the chips need to be handled carefully. Protective measures need to be taken to protect individuals, at or near, the work area.

The use of ventilating equipment, protective machine shields, safety glasses, protective clothing, appropriate ear protection, and other relevant forms of safety protection, is recommended.

Please consult your material safety data sheet (MSDS) for further information.



Quality guarantee

We have been awarded GB/T19001-ISO9001 Quality System Certificate. All our products are inspected strictly.

